



BENDING RESISTANCE TESTER PTA ST-10

Cod. 220108

For the determination of bending resistance and stiffness of paper and paperboard

Standards : ISO 2493, SCAN P29, DIN 53121, BS 3748, TAPPI T556, NFQ 03-048



PTA SPAIN

C/ Gurutzegi N° 16 Pol. Belartza
20018 SAN SEBASTIÁN
(Guipúzcoa) - Spain

PTA FRANCE

14, rue Evariste Galois / ZAC les Ruieres
38320 EYBENS - France

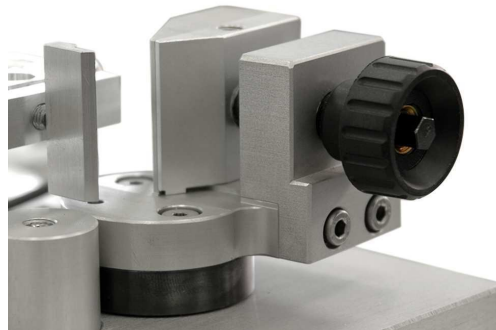
PTA ASIA

50 East Coast Road #02-73 Roxy Square
428769 SINGAPORE - Singapore



CHARACTERISTICS :

- Universal equipment for paper applications.
- Measurement of paper and paperboard.
- Fatigue. Strength of split, Split recovery.
- Taber Measurement Units.
- Manual tighten.
- Screening test length from 1-50 mm.
- Pre-settable bending angle (0.1 to 90 degrees).
- 2 times of test and 3 points of measurement (angles).
- Angle adjustable speed from 0.1 to 10 ° / second.
- Load cell 10N- Range 10-10000mN- Resolution 0,5%.
- Large graphic touch screen.
- Clear acrylic security cover.
- CE mark.



USER INTERFACE :

- Machine controlled by means of a touch screen and two auxiliary buttons.
- Through the visualization and control screen, the total control and configuration of the machine can be managed. Easy and intuitive operation of the control menu, configurable in different languages.

PTA SPAIN

C/ Gurutzegi N° 16 Pol. Belartza
20018 SAN SEBASTIÁN
(Guipúzcoa) - Spain

PTA FRANCE

14, rue Evariste Galois / ZAC les Ruieres
38320 EYBENS - France

PTA ASIA

50 East Coast Road #02-73 Roxy Square
428769 SINGAPORE - Singapore



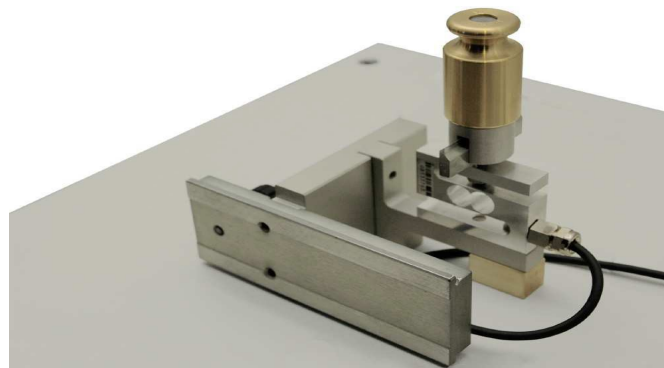
- Result table with a maximum of 10 test results.
- Possibility of display the test results in graphic way.
- Statistical control. Mean value, standard deviation and maximum and minimum values.
- Different configurable units.
- Periodical programme updatings (without additional cost).

TEST DESCRIPTION :

Bending resistance in paper and board is a complex property depending upon the network characteristics of the sheets as well as the fundamental fibre properties to which it relates. It varies with the type of paper, the fibres used, the making process and the bulk and grammage of finished sheet.

The two main criteria which govern stiffness are fibre dimensions and bulk. Rigidity has been found to be linearly proportional to the square root of thickness for a given grammage. Since the bulk density of a sheet is closely related to the degree of bonding and fibre strength, a change in any of the fundamental fibre properties will affect bending resistance.

After configuring test conditions, the test can start immediately. By pressing the “Start” button the sample is moved automatically to the load-cell. The test will be started automatically as soon the load-cell is touching the sample (pre-load selectable).



PTA SPAIN

C/ Gurutzegi N° 16 Pol. Belartza
20018 SAN SEBASTIÁN
(Guipúzcoa) - Spain

PTA FRANCE

14, rue Evariste Galois / ZAC les Ruieres
38320 EYBENS - France

PTA ASIA

50 East Coast Road #02-73 Roxy Square
428769 SINGAPORE - Singapore



PAPER TESTING ASSOCIATION

PAPER Testing Equipment



The sample-holder now goes to the pre-selected angle-position and the curve with the determined values are indicated on the large touch screen. With the holding function, a holding time can be selected and then a second measurement can be taken.

The holding times is very useful for testing label-paper, when the bending-resistance on wet samples should be tested. After the test has been done the sample holder returns to its starting position and the sample can be taken out. By means of the statistic function, the statistic values can be read (maximum, minimum, average, standard, deviation, ratio MC/CD,..) on the graphic display.

CONNECTIONS :

Electrical : 110V-230V, 50-60Hz

DIMENSIONS AND WEIGHTS :

Dimensions : 270 x 500 x 270 mm (WxDxH).

Box for Transport : 400 x 600 x 400 mm (WxDxH).

Weight net / gross : 15 kg / 20 kg.

PTA SPAIN

C/ Gurutzegi N° 16 Pol. Belartza
20018 SAN SEBASTIÁN
(Guipúzcoa) - Spain

PTA FRANCE

14, rue Evariste Galois / ZAC les Ruieres
38320 EYBENS - France

PTA ASIA

50 East Coast Road #02-73 Roxy Square
428769 SINGAPORE - Singapore

info@ptagroup.com

www.ptagroup.com